



City of Centennial
DOG LEASH
DOG WASTE
LAW ENFORCED

**ALL PETS MUST BE ON LEASH NO LONGER THAN 10 FEET
IN ACCORDANCE TO CITY ORDINANCE**

7-7-410

**ALL PET WASTE MUST BE BAGGED AND DISPOSED OF PROPERLY
IN ACCORDANCE TO CITY ORDINANCE**

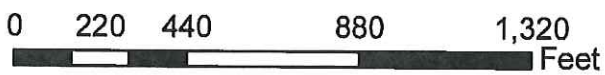
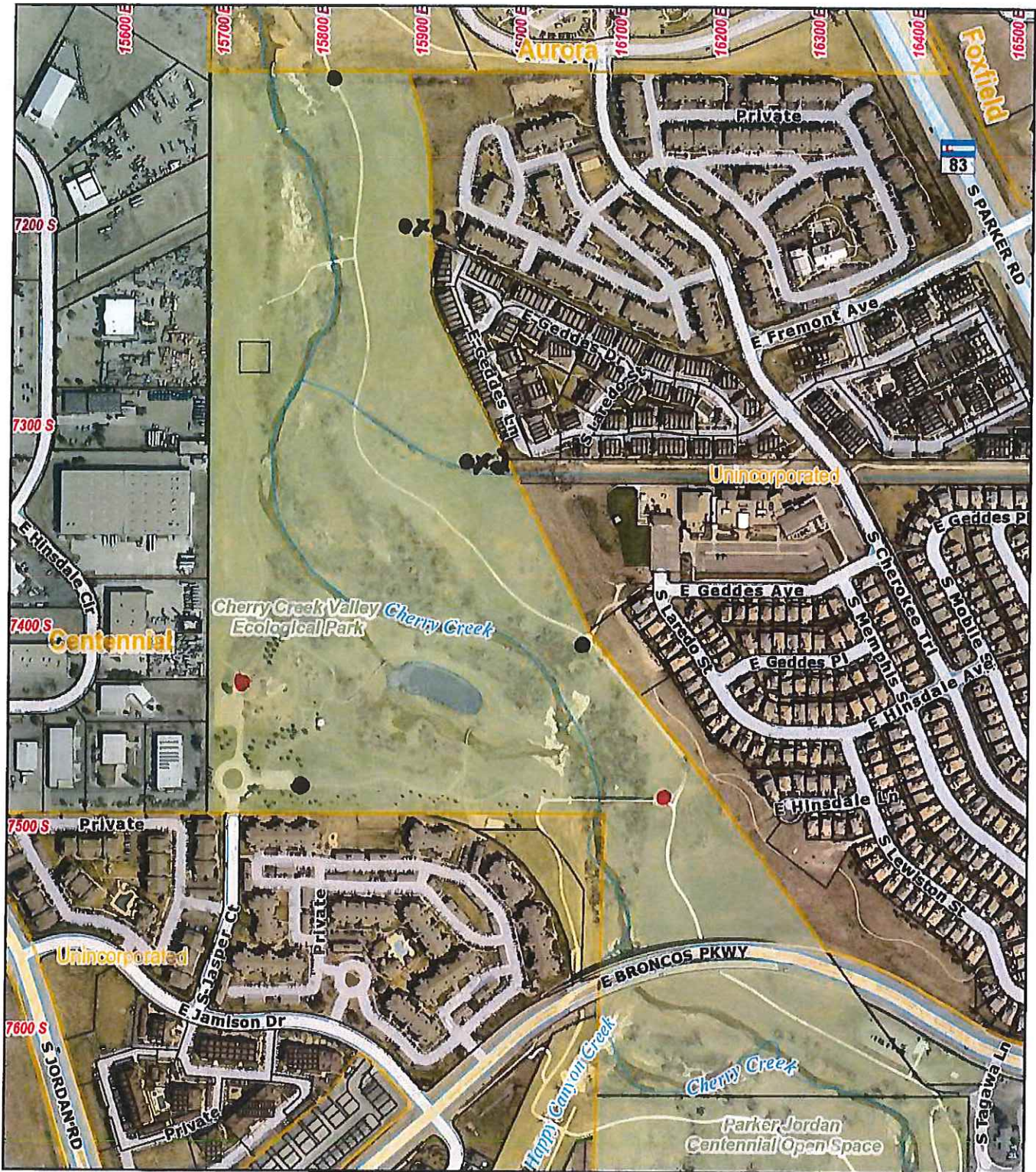
7-7-320

THANK YOU

CITY OF CENTENNIAL

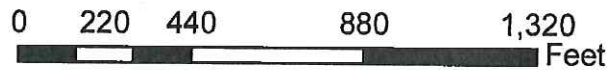
PARKER JORDAN CENTENNIAL OPEN SPACE

CCVEP Dog Ordinance Signs



- Installed signs
- Future signs

Parker Jordan Dog Ordinance Signs



● Installed signs

● Future signs